

Q.Home G2 Commissioning

Created by: HQC Sydney

Modified on: Fri, 3 Feb, 2023 at 3:34 PM

Checklist:

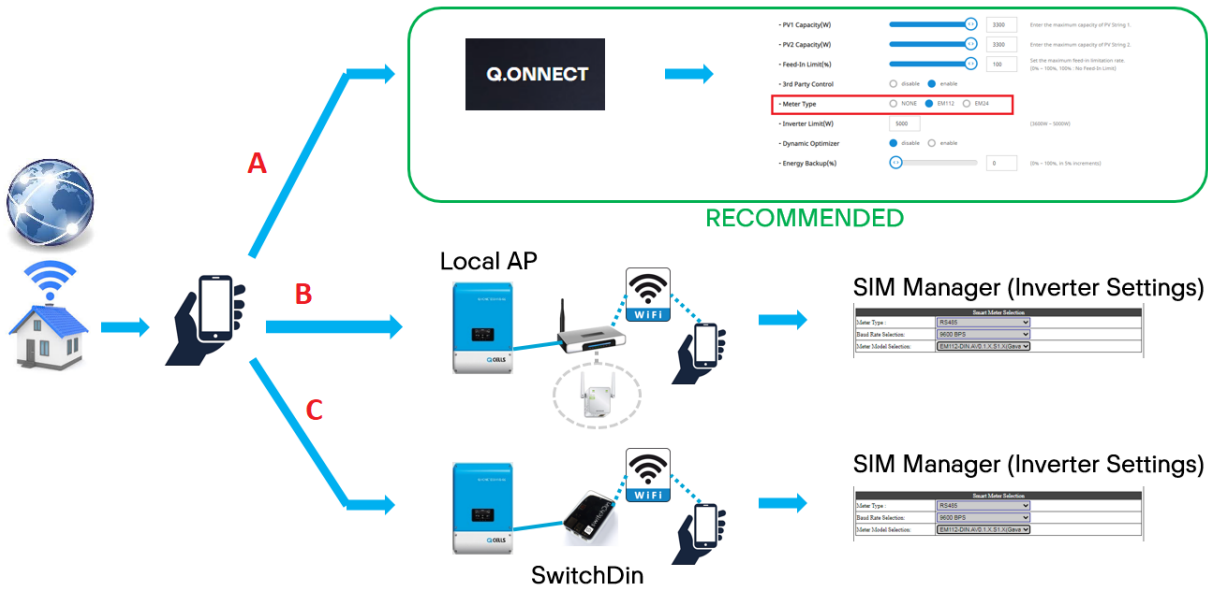
1. Create **installer account** on Q.onnect - <https://au.qcells-qonnect.com/> (<https://au.qcells-qonnect.com/>) (<https://youtu.be/HLFMSngIbGw>)**Video demo** (<https://youtu.be/HLFMSngIbGw>)
2. Register the **installation site** on Q.onnect (**Video demo** (<https://youtu.be/HLFMSngIbGw?t=67>))
3. Does the site have **internet?** - If **yes**(internet commission):
 1. You can commission the system with a **smartphone** (or any device that has internet browser)
4. Does the site have **internet?** - If **no**(Local commission):
 1. You'll need a **laptop or a SwitchDin droplet**. (Router or WiFi extender also works, or anything with local AP)

Step 1: Commission the batteries, follow the manual or view: (**Video here**) (<https://youtu.be/LuLBV8Hn9vQ>). (if 1 battery only, no commissioning required, skip this step).

Step 2: Commission the Energy Meter (either Carlo Gavazzi EM112/EM24/EM24 CT, see **Quick Installation Guide** (<https://qhomesupport.zecoenergy.com.au/helpdesk/attachments/51023147315>)) for wiring and configuration).

See below on how to commission the **correct meter type under inverter settings**.

Energy meter - with Internet commission



Method A: Online Monitoring Portal (recommended)



Go to <https://au.qcells-qonnect.com/> (<https://au.qcells-qonnect.com/>).. Login and go to: select the site by choosing **Serial number -> Product information -> Basic Settings (This can be done prior attending site)**

- PV1 Capacity(W) 3300 Enter the maximum capacity of PV String 1.

- PV2 Capacity(W) 3300 Enter the maximum capacity of PV String 2.

- Feed-In Limit(%) 100 Set the maximum feed-in limitation rate. (0% - 100%, 100% : No Feed-In Limit)

- 3rd Party Control disable enable

- Meter Type NONE EM112 EM24

- Inverter Limit(W) (3600W - 5000W)

- Dynamic Optimizer disable enable

- Energy Backup(%) 0 (0% - 100%, in 5% increments)

Method B: Connect on the same network (No SwitchDin in between). Your device and the inverter will be on the same network. Either from the homeowner modem or via a BYO router/WiFi extender.

Local AP



SIM Manager (Inverter Settings)

Smart Meter Selection	
Smart Meter Type:	RS485
Baud Rate Selection:	9600 BPS
Smart Meter Model Selection:	EM112-DIN-A/C 1 X S1 X/Gate

Use the **assigned IP address** that can be found from **LCD screen** and access **port 8000**. E.g. 172.150.25.10:8000 on **a internet browser**.

Inverter LCD Screen



Log into SIM manager PW: **sim0325**

Choose the meter model.

Smart Meter Selection	
Meter Type :	RS485
Baud Rate Selection:	9600 BPS
Meter Model Selection:	EM112-DIN.AV0.1.X.S1.X(Gava)

Method C: Using SwitchDin to access SIM manager. (DO NOT COMMISSION THE SWITCHDIN DROPLET or it won't work)



SIM Manager (Inverter Settings)

Smart Meter Selection	
Meter Type :	RS485
Baud Rate Selection:	9600 BPS
Meter Model Selection:	EM112-DIN.AV0.1.X.S1.X(Gava)

Video demo to access SIM manger via SwitchDin: click [_\(https://youtu.be/FLwKsGXVkkQ\) here](https://youtu.be/FLwKsGXVkkQ)
[_\(https://youtu.be/FLwKsGXVkkQ\)](https://youtu.be/FLwKsGXVkkQ)

- Step 1. Connect SwitchDin to PCS directly via ethernet cable and the ethernet-to-usb adaptor in between.
- Step 2. Power-on both devices and connect SwitchDin's droplet WiFi "Droplet xxxxxx". Use password "SwitchDin".
- Step 3. Check the assigned IP address from the LCD screen.



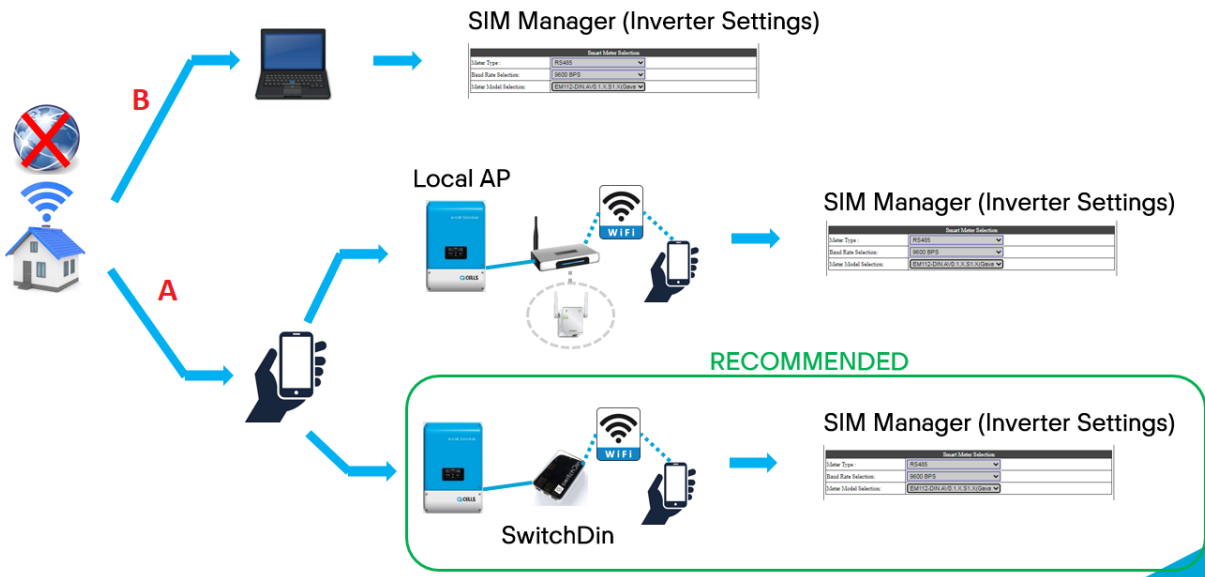
Use the assigned IP address that can be found from LCD screen and access port 8000. E.g. 172.150.25.10:8000 on a internet browser.

Log into SIM manager PW: **sim0325**

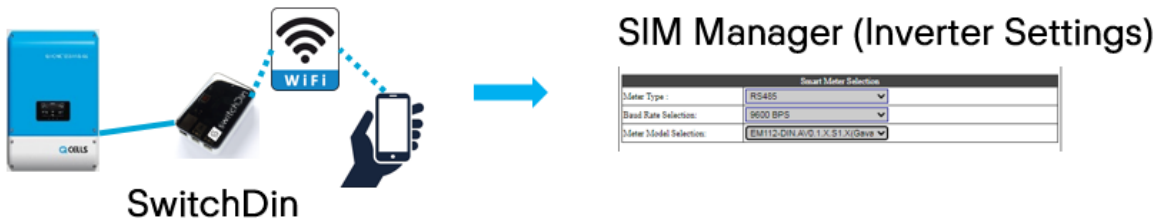
Choose the meter model.

Smart Meter Selection	
Meter Type :	RS485
Baud Rate Selection:	9600 BPS
Meter Model Selection:	EM112-DIN.AV0.1.X.S1.X(Gava)

Energy meter - with local commission



Method A: Using SwitchDin (recommended) to access SIM manager. (DO NOT COMMISSION THE SWITCHDIN DROPLET or it won't work)



Video demo to access SIM manger via SwitchDin: click [here](https://youtu.be/FLwKsGXVkkQ) (<https://youtu.be/FLwKsGXVkkQ>)

- Step 1. Connect SwitchDin to PCS directly via ethernet cable and the ethernet-to-usb adaptor in between.
- Step 2. Power-on both devices and connect SwitchDin's droplet WiFi "Droplet xxxxxxx". Use password "SwitchDin".
- Step 3. Check the assigned IP address from the LCD screen.



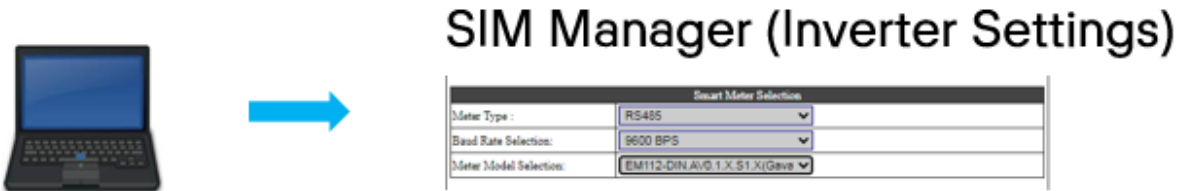
Use the assigned IP address that can be found from LCD screen and access port 8000. E.g. 172.150.25.10:8000 on a internet browser.

Log into SIM manager PW: **sim0325**

Choose the meter model.

Smart Meter Selection	
Meter Type :	RS485
Baud Rate Selection:	9600 BPS
Meter Model Selection:	EM112-DIN.AV0.1.X.S1.X(Gava)

Method B: Connect via a laptop.



Connect to laptop using an ethernet cable and connect the other end to LAN port on inverter (refer to **Installation Video @8:31** (https://youtu.be/N_zz5S9XSyM?t=511), or section 7 in Installation Manual)

Log into SIM manager PW: **sim0325**

Choose the meter model.

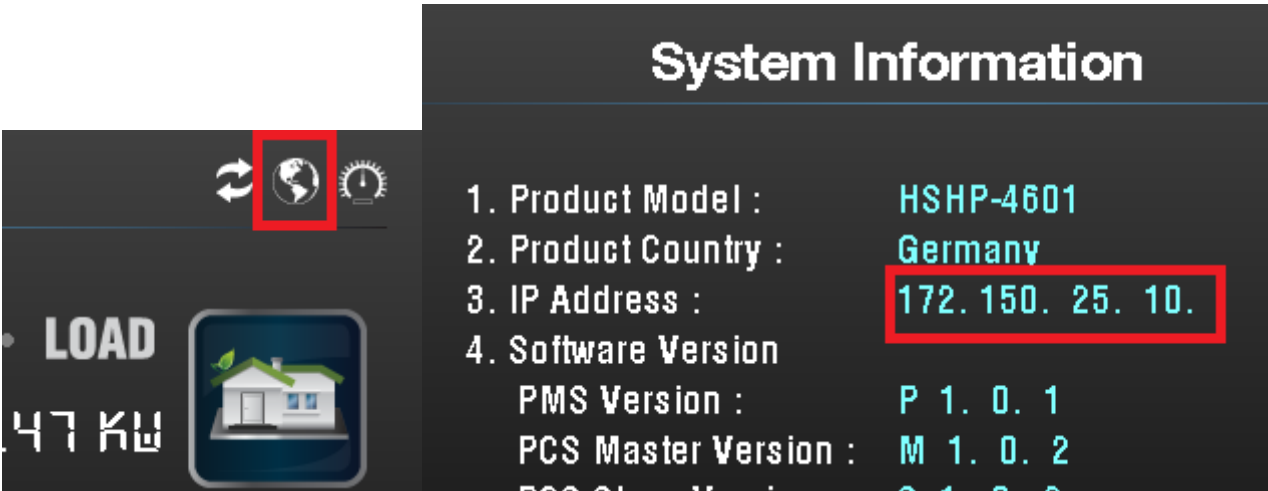
Smart Meter Selection	
Meter Type :	RS485
Baud Rate Selection:	9600 BPS
Meter Model Selection:	EM112-DIN.AV0.1.X.S1.X(Gava)

Step 3. Confirmation of energy meter commissioning

If you see the **meter icon** then energy meter has been commissioned correctly.

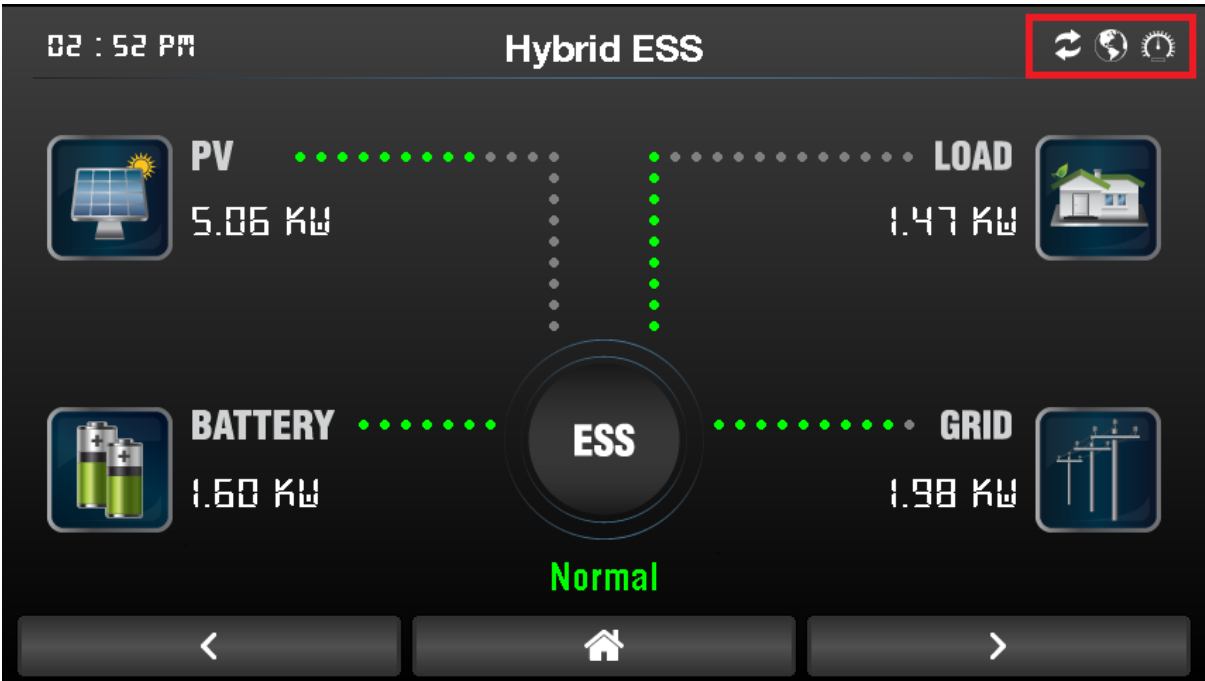


Step 4: Connect to the internet (either via direct ethernet/WiFi repeater/SwitchDin). If you see the **globe icon** and **IP address** other than 0.0.0.0 then it should be already connected to the internet.



<https://youtu.be/LuLBV8Hn9vQ>

Final Step: If you see all **three LED lights green** and these **three icons below** then commissioning has been completed!



Having trouble? Try below videos or give us a call on **1800 QHOME 0 (1800 746 630)**

Q.HOME+ ESS HYB-G2 Multiple Batteries Commissioning (quick way), <https://youtu.be/LuLBV8Hn9vQ>

Q CELLS Q.HOME+ ESS HYB-G2 Installation Tutorial, https://youtu.be/N_zz5S9XSyM

Q.HOME+ ESS HYB-G2 Energy Meter EM112 set-up (<https://youtu.be/wm-aX0imqTc>)

H Hqc is the author of this solution article.