

TOMORROW'S TECHNOLOGY TODAY

Q.HOME+ESS HYB-G2 Fully-Integrated Energy Solution

Q.HOME+ESS HYB-G2



TODAY IS TOMORROW

There's a new way to harness nature's ultimate asset,
that's sustainable, scalable, and renewable.

Q.HOME+ESS HYB-G2 from Q CELLS brings world leading technology
to power tomorrow with today's sun. It's innovation that uses solar to its
maximum potential. To bring you a new level of energy self-sufficiency.

The future looks bright.



ABOUT Q.HOME

Q.HOME is Australia's first fully wrapped solar and energy storage system from Australia's most-trusted solar experts, Q CELLS. Q.HOME's complete modular and scalable energy storage solution powers your life day and night.

Through one seamless integrated system of a hybrid inverter, lithium-ion battery (in 4kWh, 8 kWh and 12 kWh sizes), and complimentary home energy management system (HEMS) from SwitchDin, you can capture the sun and use it like never before. In the event of a power failure, you'll never go without the essentials, thanks to the backup power function that doesn't need the grid to start-up. Say yes to no more blackouts and make your home energy work harder and smarter.

Perfectly paired with any of Q CELLS' award-winning, high-performance solar modules, Solar PV + Q.HOME can help you profoundly reduce your electricity costs. Q.HOME comes as a complete energy package with all the components you need to transform to energy independence; like an energy meter and state-of-the-art HEMS and monitoring. Best of all, Q.HOME+ESS HYB-G2 comes as a fully wrapped product with a single point of contact and local support from one of the world's largest and most-trusted solar manufacturers, Q CELLS.

Q.HOME IS DIFFERENTIATED ACROSS 3 KEY AREAS



COMPLETE
SOLUTION



GRIDLESS
BACKUP
FUNCTION



SINGLE
POINT OF
CONTACT

How Does It Work?



GENERATE

Generate electricity with your solar modules during the day.



CONSUME

Use the energy produced to directly support your home's energy load.



STORE

Any excess electricity produced charges Q.HOME's battery.



EXPORT

Once the battery is charged, further excess energy is exported to the grid.



BACKUP

In the event of a power failure, critical loads like refrigerators or wifi routers can remain powered thanks to backup functionality.



MONITOR &
OPTIMISE

Monitor your system performance and let AI and machine-learning analyse your generation and consumption patterns to find further savings.

Q CELLS
Q.HOME+ESS HYB-G2

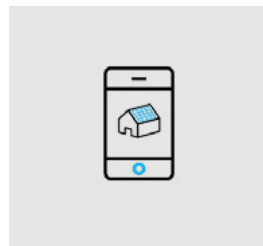
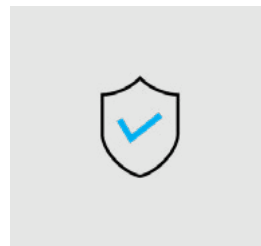
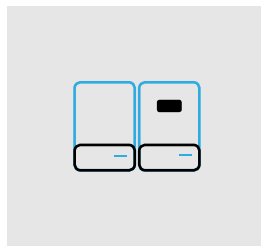
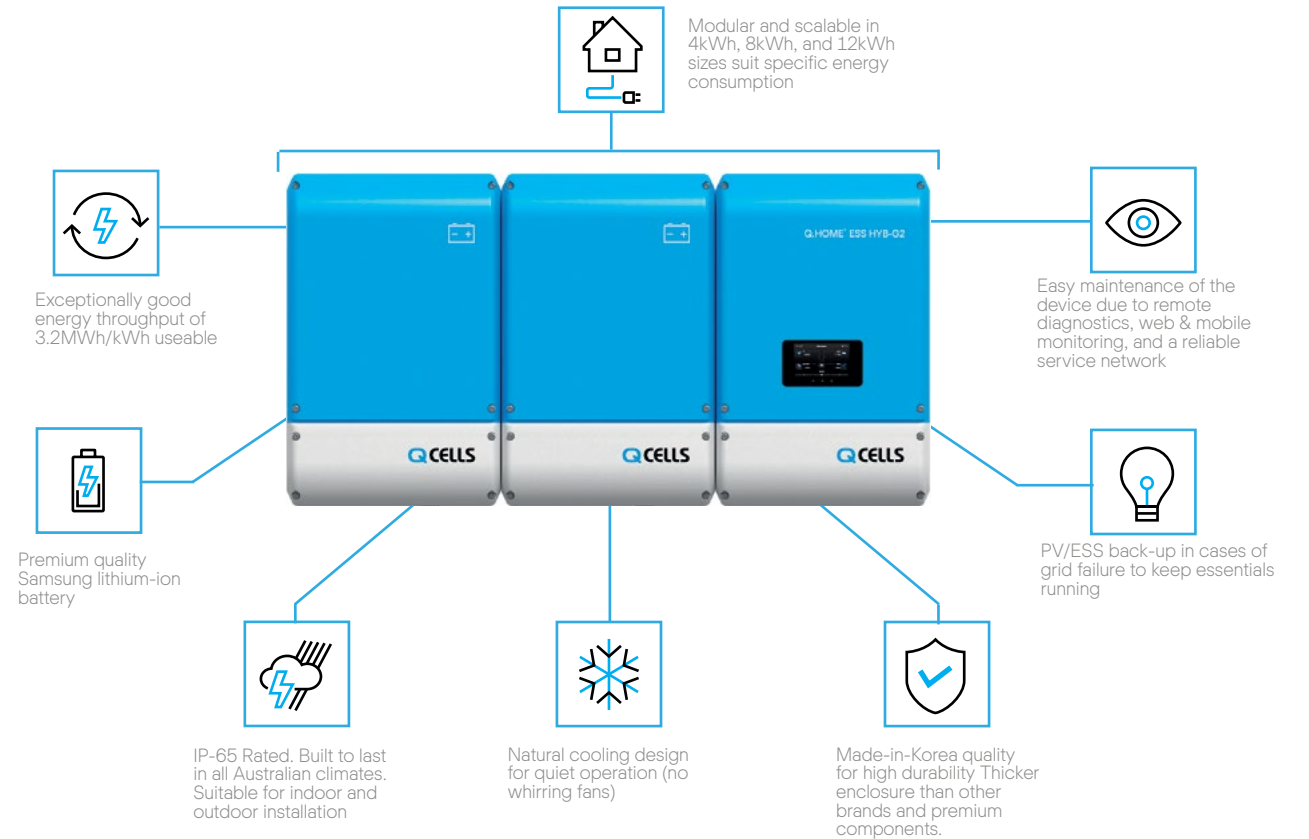


PREMIUM QUALITY BUILT TO LAST

Capture the sun and use it like never before. Q.HOME's features make it an ingenious way to reduce electricity costs and be more energy independent.

A COMPLETE ENERGY SOLUTION FROM Q CELLS

Q.HOME+ESS HYB-G2 uniquely comes as a complete energy package so you can reap the benefits of energy independence for years to come. Q.HOME is the only PV+ESS to come fully-wrapped under one brand and bundled with premium components and services to help you take your home energy to the next level.



Q.HOME+ESS HYB-G2

Q.HOME comes with a 5 kW PCS Hybrid Inverter and Samsung Lithium Ion battery units scalable in 4kWh, 8kWh, and 12kWh sizes.

10 YEAR WARRANTY

Q.HOME's premium quality inverter and battery come with a 10-year product and performance warranty and is supported by over 20 staff based in Australia.

ENERGY METER

Complimentary Carlo Gavazzi Single Phase energy meter ensures compatibility with your home from day 1.

HOME ENERGY MANAGEMENT SYSTEM

1 year subscription to SwitchDin, a leading HEMS provider to provide monitoring information as well as energy optimisation that uses AI to take your savings even further.

PERFORMANCE

3.2MWH THROUGHPUT AT END OF LIFE

Q.HOME boasts high reliability with 3.2 MWh guaranteed 10-year throughput energy per kWh of battery.

- Max. PV Input: 6.6kW
- MPPT Range: 125~500V
- Max Output Current: 25A
- Inverter output rating 5.0kW



REFRESHINGLY SIMPLE SINGLE POINT OF CONTACT

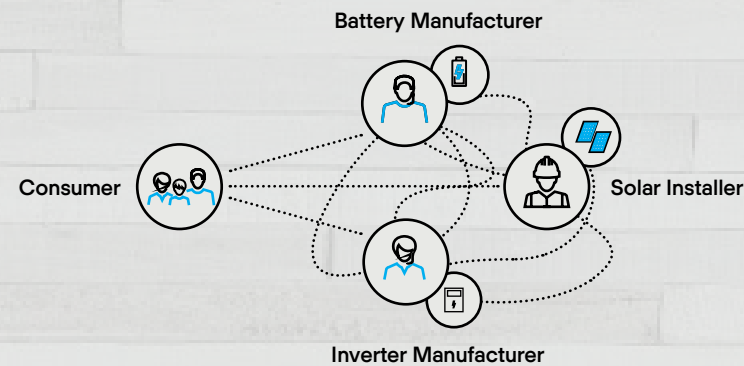
Q.HOME comes with arguably the most simple and secure after-sales support on the market. Q.HOME comes fully-backed with friendly and efficient local support through the Q.HOME service centre.

Q CELLS local Australian service centre includes:

- 24/7 Live Monitoring*
- 7 days a week support line
- 24 hours response time
- Active fault alert monitoring (24/7)
- National network of support technicians

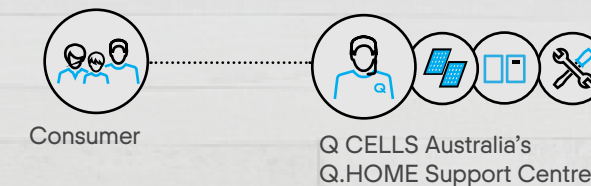
YESTERDAY'S ENERGY

Before, if an issue arose with their system, consumers and their installation company had to deal with multiple manufacturers. Often times, only to be sent in circles while the consumer waits for a solution from multiple parties trying to pass the blame. This can result in weeks or months of back-and-forth while the system under-performs.



TOMORROW'S ENERGY TODAY

Now, Q.HOME customers can save time and hassle by calling Q CELLS local Q.HOME support centre. The support centre works with your installer to efficiently deal with any issues and get you back up and running should any issues arise.

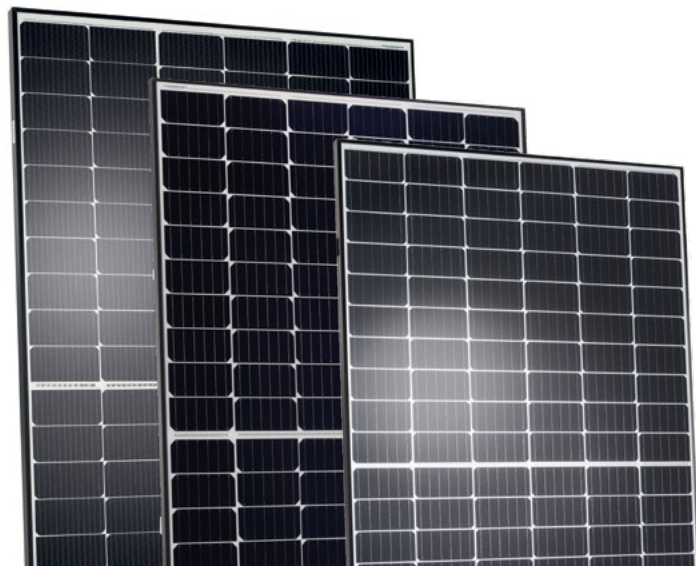


AUSTRALIA'S MOST-TRUSTED SOLAR ENERGY BRAND SINCE 2009

Q CELLS are the solar experts. We are one of the world's largest, and most-awarded PV brands on the market. Q.HOME can be paired with any of Q CELLS's award-winning PV modules for ultimate, performance, reliability, and support.

Q CELLS has served Australia since 2009, longer than any other PV manufacturer currently on the market and has been awarded EUPD Research's Top Brand PV Award five consecutive years in a row.

We offer extensive local warranty support, including a dedicated Q.HOME Customer Service Line for ultimate peace of mind. Q CELLS offers arguably the most secure warranty with over 20 local support staff based in Sydney as well as backing by Hanwha Group, South Korea's eighth largest conglomerate.



HANWHA GROUP STRONG BACKING

As a member of the Hanwha Group, one of South Korea's seventh largest conglomerates, Q CELLS is backed by a strong partner with a proud 67-year history. Hanwha Group's experience, broad expertise and financial strength uniquely position us to address our client's energy needs today – and tomorrow.



REVENUE 2018
61.24_B



FOUNDED IN
1952



IN ASSETS
180_B



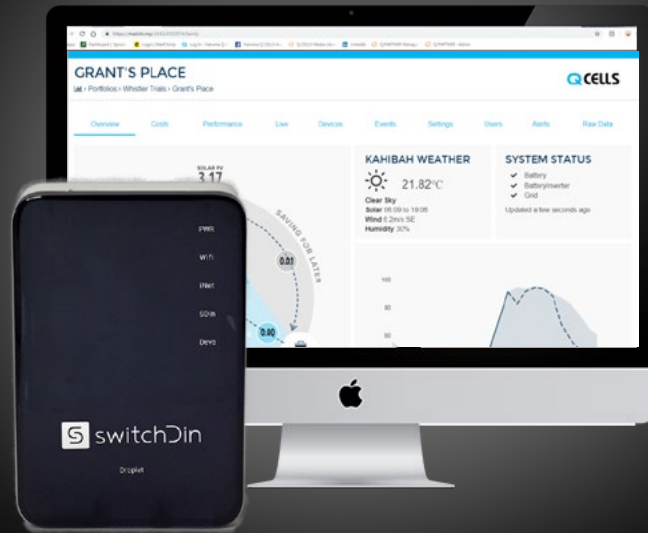
GLOBAL NETWORKS
325

Globally, Hanwha Group is ranked 261st among Fortune Global 500 companies and operates 325 networks worldwide. At the centre of it all, it is our group's belief and desire to lead a sustainable future for both mankind and our planet. These beliefs are what drive Hanwha Q CELLS to pursue different possibilities – developing and innovating new energy solutions.

Q CELLS, a leading brand under Hanwha Group, is one of the world's largest and most recognized photovoltaic manufacturers for its high-quality, high-efficiency solar cells and modules. It is headquartered in Seoul, South Korea (Global Executive HQ) and Thalheim, Germany (Technology & Innovation HQ).

HOME ENERGY MANAGEMENT SYSTEM UNLOCK YOUR POTENTIAL

Get complimentary Droplet™ from SwitchDin and first year subscription to a state-of-the-art Home Energy Management System (HEMS) with Q.HOME+ESS HYB-G2. HEMS is the smart way to optimise your energy consumption to maximise your electricity savings.



WHY SWITCHDIN?

Saving money on electricity isn't easy when you don't know how your home is consuming electricity and you can't optimise how and when your solar and battery are charging and discharging. With SwitchDin and Q.HOME, now can track and control your consumption, PV and ESS in one platform. The SwitchDin platform's artificial intelligence chooses the best times to charge your battery, use your energy, or export to the grid. How?

SwitchDin runs in the background and knows what time electricity are cheapest and which times they are most expensive and decides how your Q.HOME system behaves. It's like having your very own energy broker monitoring and controlling your energy fluctuating market.

SwitchDin allows you to track and monitor your past and present energy use to see trends and spot opportunities to change behaviour for further savings - like doing laundry earlier in the day versus later.

Q.HOME is the only energy storage system to come with a first year subscription to SwitchDin's leading HEMS platform, along with SwitchDin's data integrator and controller, called Droplet™. It's a powerful and easy way to monitor and optimise Q.HOME with their intuitive online platform. Make your energy work smarter.

BACKUP MODE NEVER GO DARK AGAIN

Q.HOME's convenient, reliable backup power mode ensure you can keep the essentials running in a black out.



GRID FORMING

Unlike most systems, Q.HOME does not need the grid for startup.



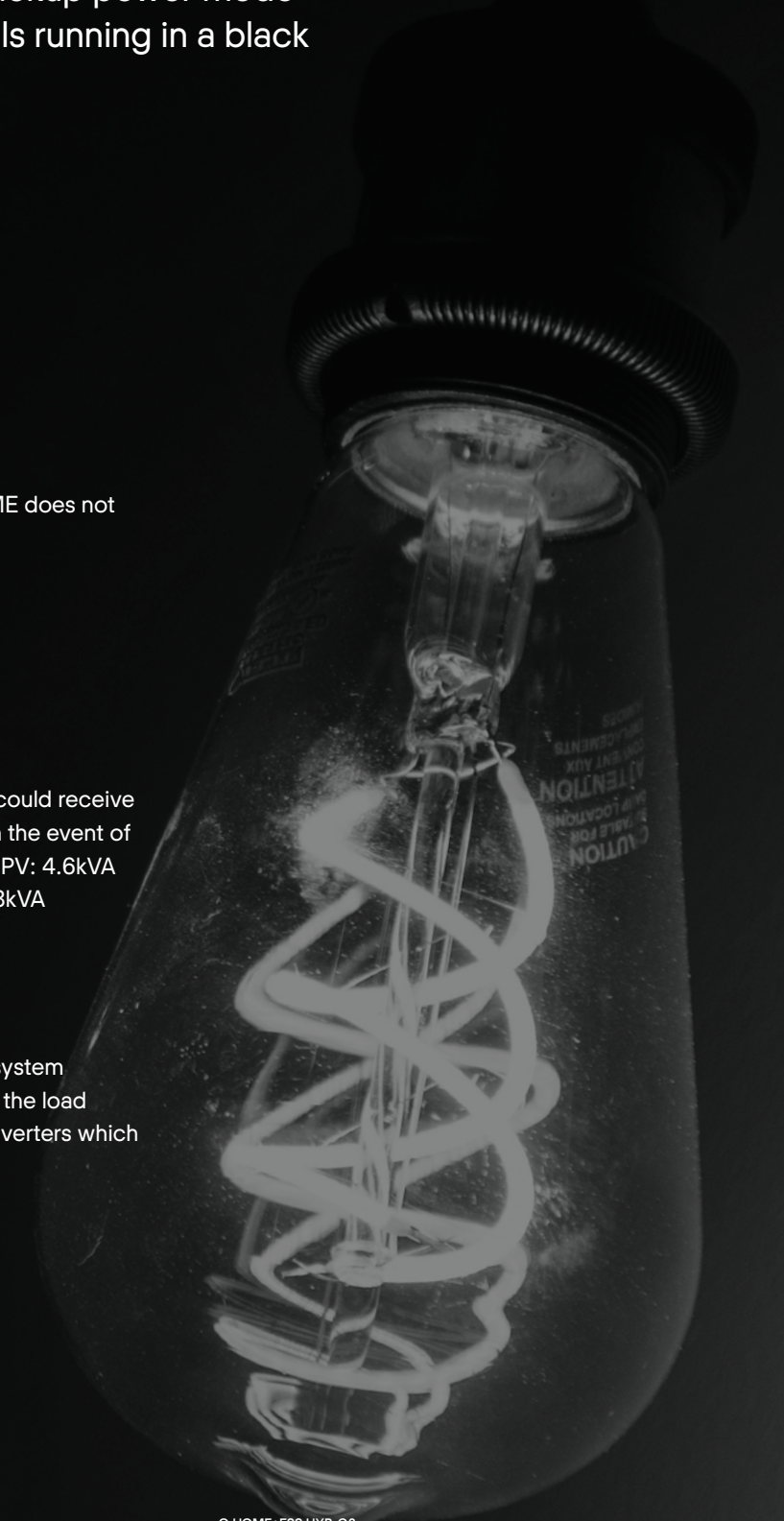
RELIABLE

Depending on the load, you could receive 2-3 hours of reliable power in the event of a blackout. Max. Power with PV: 4.6kVA (10min). Continuous Power: 3kVA



POWERFUL

Every kilowatt of the 6.6kW system gets distributed and used for the load or the battery - unlike most inverters which have to choose.



Q CELLS AUSTRALIA

Suite 1, Level 1
15 Blue Street
North Sydney, NSW, 2060

TEL +61 (2) 9016-3033
FAX +61 (2) 9016-3032
EMAIL +61 (2) 9016-3033
WEB www.q-cells.com/au